



CONCERTINO COLLECTION

Flute

INSTRUMENTS THAT OUTPERFORM

Assembly, Care & Maintenance Guide



The Name You Know

www.suzukibandinstruments.com

STOP!

Read This First Before You Assemble Your Flute

Did You Know This?

Your new Flute is manufactured by the Suzuki Corporation, the Worlds largest producer of musical instruments for education. We have been making the coolest musical

instruments for your school and church for over 50 years! And now, we've designed a Flute that you can learn to play quickly and easily. We know you can't wait to play in the band, marching band or orchestra and make exciting music together with all your friends. Playing a musical instrument, especially in a group, is an incredible experience. If you pay attention and study a little each day, pretty soon you will be amazed at the awesome music you will be able to perform. And your Suzuki Flute will perform for you too. Together, you'll both have a really great time!

This Is A Precise And Delicate Instrument . . . Be Careful With It!

The Flute, as with all musical instruments, is a precise, yet delicate instrument. It has hundreds of very small parts, all coming together to



create a beautiful musical instrument. You must be very careful when handling your new Flute, putting it together and taking it apart. We recommend that you let your music teacher show you how your new Flute should be assembled and dis-assembled. You'll get the hang of it very quickly. In the meantime, read through this brochure now so you can get familiar with the assembly and care of your new Flute. And be careful!

Wanna Get Good On Your Instrument Real Fast?

Who is your favorite band or musician? Whether you like rock, pop, country or classical, you can be sure that all the best players had one thing in common . . . a private teacher. After your music teacher has shown you the basics of how to put your instrument together and how to play a few notes, its time to get some private instruction. Your music teacher may have some recommendations or may even be the perfect private teacher you are looking for. It's a great way to get real good, real fast.

If You Have Any Problems Or Questions About Your Flute, Call Us Toll Free. We Can Help You.

Do Not Return Your Flute To The Store!

1-800-854-1594

You can also visit our web site at www.suzukibandinstruments.com

1. UNPACKING YOUR NEW FLUTE



A. Position The Case

Place the aluminum "Roadie" Flute case in front of you as shown in this picture. You should be able to see the Suzuki logo on the case. If you do not see the logo, the case is upside down and should NOT be opened. Open the case ONLY if you can see this logo.

B. Open The Case

Unhook the 2 latches on either side of the handle and open the lid. Your new Flute has 3 different sections that must be CAREFULLY unwrapped.

C. Unwrap Your Flute

- Slowly remove the plastic covering and paper wrapping on each of the 3 Flute sections. ①
- Small foam tabs have been inserted to protect the keys during shipping. These must now be removed and can be thrown away. ②

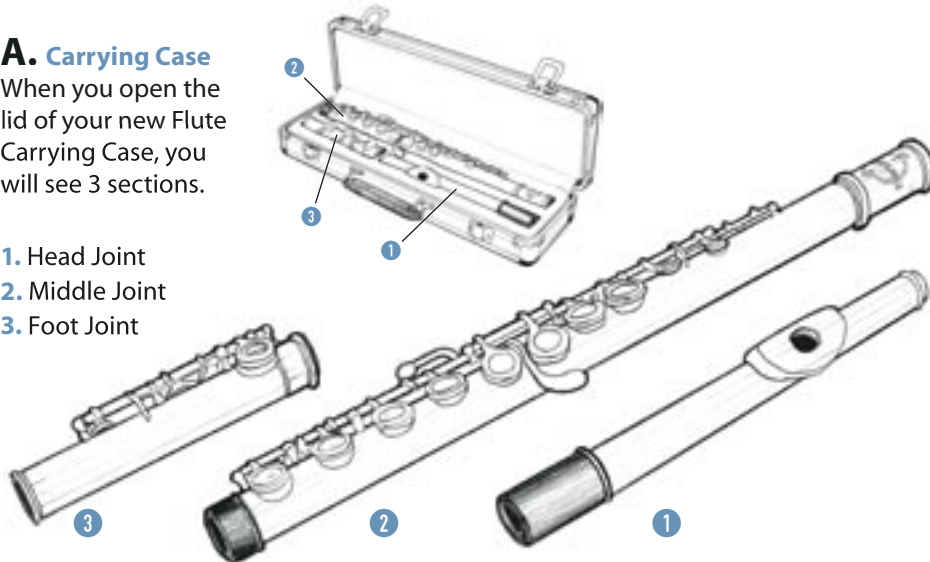
Carefully put the sections back in the case in their proper compartments!

2. HERE ARE THE NAMES OF YOUR FLUTE PARTS

A. Carrying Case

When you open the lid of your new Flute Carrying Case, you will see 3 sections.

1. Head Joint
2. Middle Joint
3. Foot Joint



B. Accessories

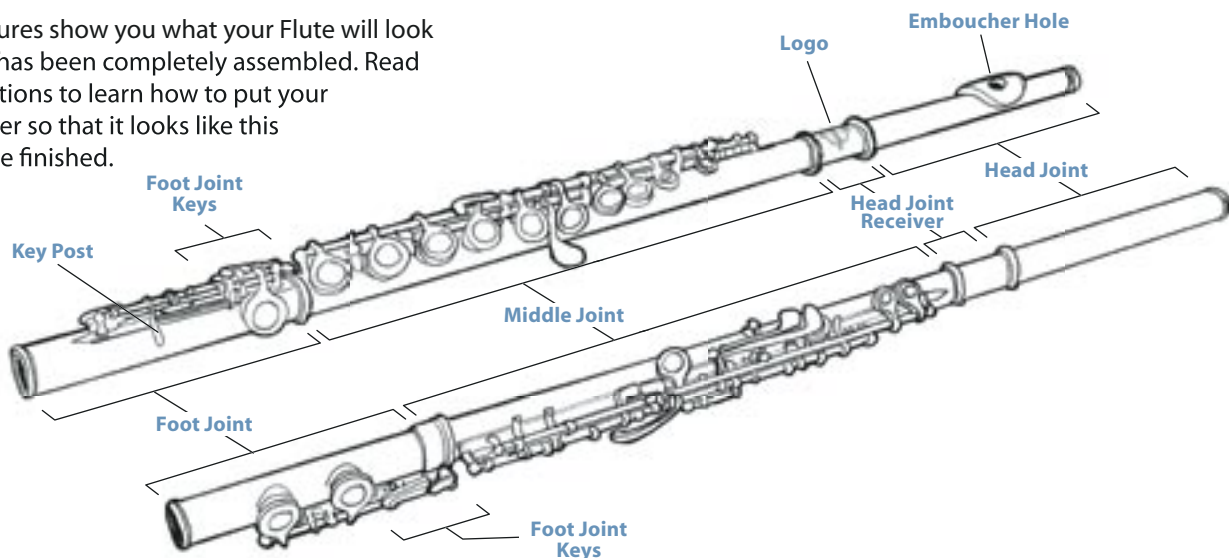
Your new Flute includes these accessories.

1. Cleaning Rod
2. Cleaning Cloth
3. Tenon Grease
4. Polishing Cloth



3. THIS IS WHAT YOUR FLUTE WILL LOOK LIKE WHEN ASSEMBLED

These 2 pictures show you what your Flute will look like when it has been completely assembled. Read the next sections to learn how to put your Flute together so that it looks like this when you are finished.



4. HOW TO PUT YOUR NEW FLUTE TOGETHER

A. Protective Caps and Tenon Grease

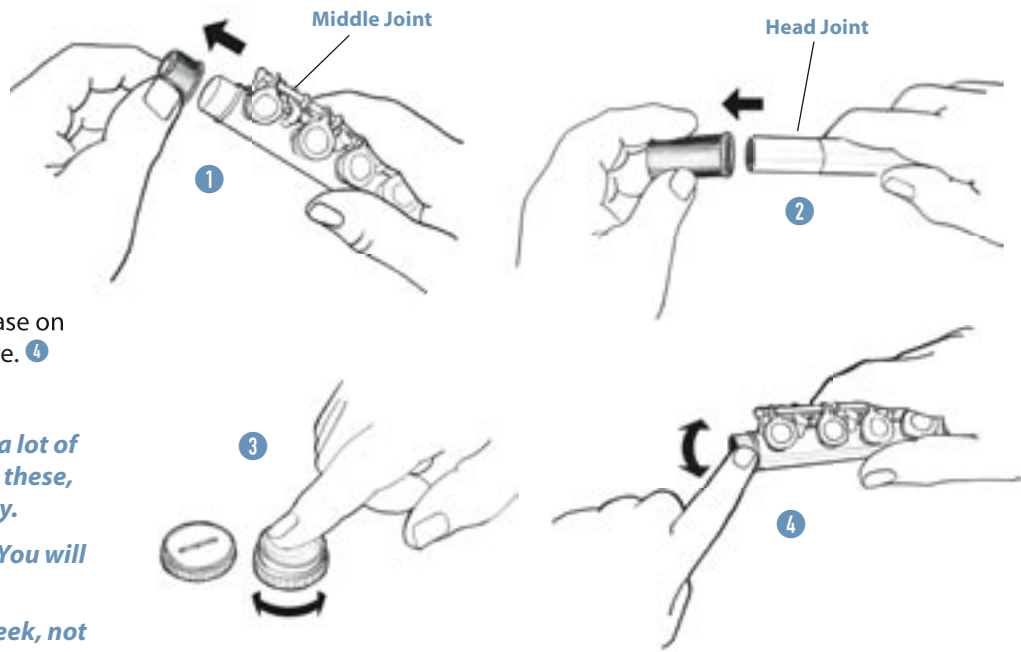
- Locate and remove the Head Joint and Middle Joint from the Case.
- Remove the Protective Cap from the Middle Joint. Return it to the case. ①
- Remove the Protective Cap from the Head Joint. Return it to the case. ②
- Locate the Tenon Grease. Place a very small amount on your pointer finger. ③
- Spread a very small amount of Tenon Grease on the 2 areas where the Protective Caps were. ④

BE CAREFUL!

Hold the Flute sections gently! Do not put a lot of pressure on the keys and rods. If you bend these, your Flute will become very difficult to play.

Do not throw away the 2 Protective Caps. You will use them again and again.

Use Tenon Grease ONLY about once per week, not every time you play your flute.

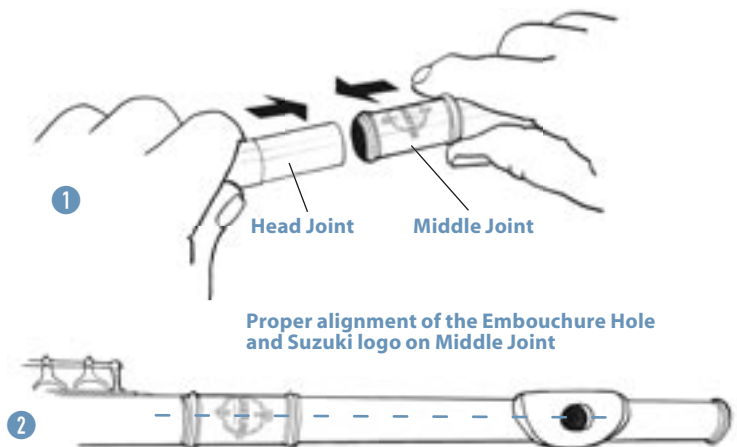


B. Attach the Head Joint to the Middle Joint

- Gently hold the Head Joint in one hand and the Middle Joint in the other as shown. ①
- Slowly push the 2 sections together using a back and forth motion.
- When the 2 sections fit tightly together, the Embouchure Hole on the Head Joint and the Suzuki Logo on the Middle Joint should line up as shown. ②

BE CAREFUL!

Push the 2 sections together carefully. Use a back and forth motion. Do not turn the parts around and around.

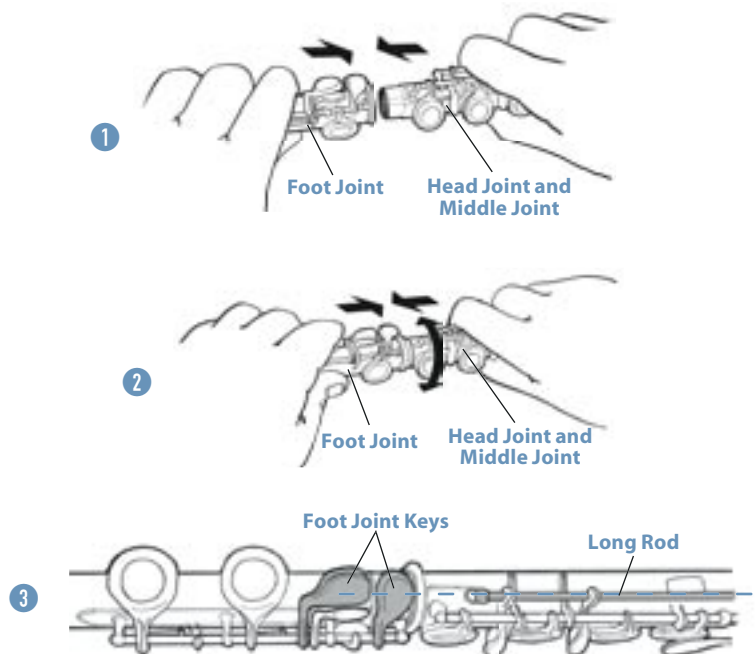


C. Now Attach the Foot Joint

- Gently hold the assembled Head Joint and Middle Joint section in one hand, and the Foot Joint in the other as shown. ①
- Now, slowly push the 2 sections together using a back and forth motion. ②
- When the 2 sections fit tightly together, the long rod of the Middle Joint and the center of the keys on the Foot Joint should line up as shown. ③

BE CAREFUL!

If the sections do not fit together easily, wipe the Tenons with a dry cloth.



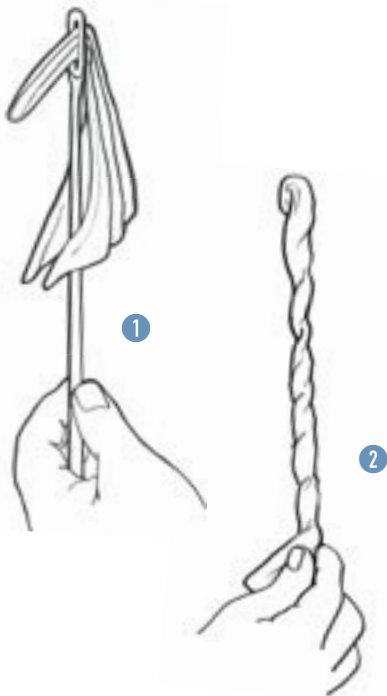
Your new Flute should now look like this. *Have fun!*



5. WHEN YOU HAVE FINISHED PLAYING YOUR FLUTE

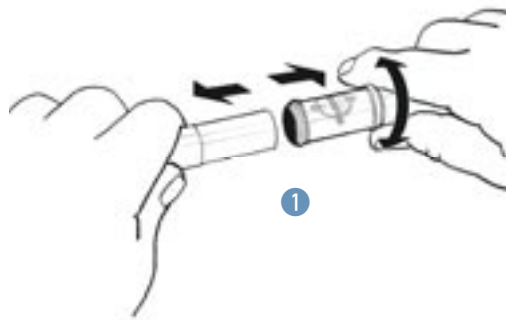
A. Prepare the Cleaning Rod

- Locate the Cleaning Rod, Cleaning Cloth and Polishing Cloth in the Flute Case.
- Take a corner of the Cleaning Cloth and put it through the open end of the Cleaning Rod as shown. ①
- Then, twist the Cloth down the Rod as shown. ②

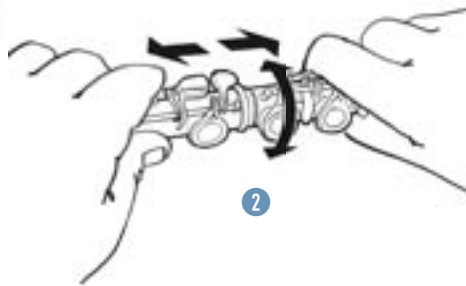


B. Taking apart the sections

- Remove the Head Joint using a gentle back and forth motion. Set it aside. ①

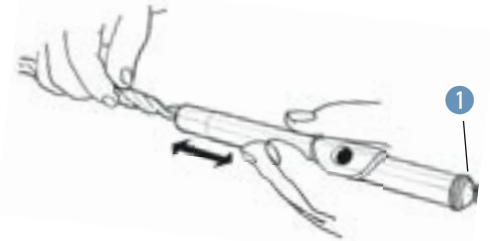


- Separate the Middle Joint and the Foot Joint using a gentle back and forth motion. Do NOT turn the instrument sections around and around. ②

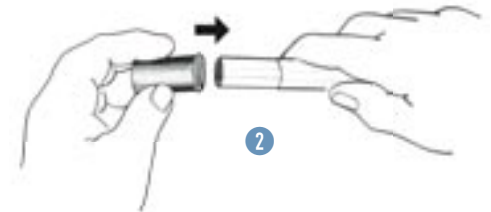


C. Cleaning your Flute

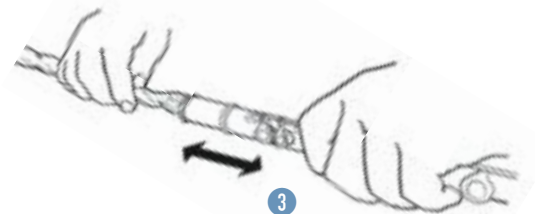
- Insert the Cleaning Rod with attached Cleaning Cloth into the Head Joint. Pull it back and forth a few times. Do NOT push the Cleaning Rod all the way into the Head Joint. You could damage the end cap. ①



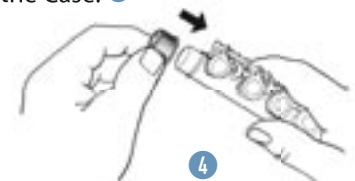
- Place the plastic End Cap back on the Head Joint and put it back in the Case. ②



- Insert the Cleaning Rod and Cloth into both the Middle Joint and Foot Joint. Pull it back and forth a few times. Do NOT push the Cleaning Rod all the way through these sections. ③



- Put the plastic End Cap back on the Middle Joint and put both sections back in the Case. ④



BE CAREFUL!

Gently handle the Flute sections.

Do NOT put a lot of pressure on the Keys.

Do NOT push the Cleaning Rod into the Head Joint Cap.

All the parts of your Flute should fit easily into the Case.

Do NOT close the lid if you feel any pressure.

Care & Maintenance

DO'S

- DO** Be careful when handling your Flute. It is a delicate instrument.
- DO** Use a SMALL amount of Tenon Grease, but only once per week.
- DO** Carefully clean each Flute section each time you play your Flute.
- DO** Use a gentle back and forth motion when putting together or taking apart your Flute sections.
- DO** Replace the 2 plastic End Caps back on the Middle and Head Joints after use.
- DO** Put each section back in the correct compartment in the Case.

DON'TS

- DON'T** Force the sections into the Case.
- DON'T** Close the lid if it seems difficult.
- DON'T** Eat while playing.
- DON'T** Turn the Flute sections around and around.
- DON'T** Press hard on the Keys or Rods when handling them.
- DON'T** Force the Cleaning Rod into any of your Flute sections.



CONCERTINO COLLECTION
Flute
INSTRUMENTS THAT OUTPERFORM



The Name You Know

www.suzukibandinstruments.com