



CONCERTINO COLLECTION

Saxophone

INSTRUMENTS THAT OUTPERFORM

Assembly, Care & Maintenance Guide



The Name You Know

www.suzukibandinstruments.com

STOP!

Read This First Before You Assemble Your Saxophone

Did You Know This?

Your new Saxophone is manufactured by the Suzuki Corporation, the Worlds largest producer of musical instruments for education. We have been making the coolest musical instruments for your

school and church for over 50 years! And now, we've designed a Saxophone that you can learn to play quickly and easily. We know you can't wait to play in the band, marching band or orchestra and make exciting music together with all your friends. Playing a musical instrument, especially in a group, is an incredible experience. If you pay attention and study a little each day, pretty soon you will be amazed at the awesome music you will be able to perform. And your Suzuki Saxophone will perform for you too. Together, you'll both have a really great time!

This Is A Precise And Delicate Instrument . . . Be Careful With It!

The Saxophone, as with all musical instruments, is a precise, yet delicate instrument. It has hundreds of very small parts, all coming together to



create a beautiful musical instrument. You must be very careful when handling your new Saxophone, putting it together and taking it apart. We recommend that you let your music teacher show you how your new Saxophone should be assembled and dis-assembled. You'll get the hang of it very quickly. In the meantime, read through this brochure now so you can get familiar with the assembly and care of your new Saxophone. And be careful!

Wanna Get Good On Your Instrument Real Fast?

Who is your favorite band or musician? Whether you like rock, pop, country or classical, you can be sure that all the best players had one thing in common . . . a private teacher. After your music teacher has shown you the basics of how to put your instrument together and how to play a few notes, its time to get some private instruction. Your music teacher may have some recommendations or may even be the perfect private teacher you are looking for. It's a great way to get real good, real fast.

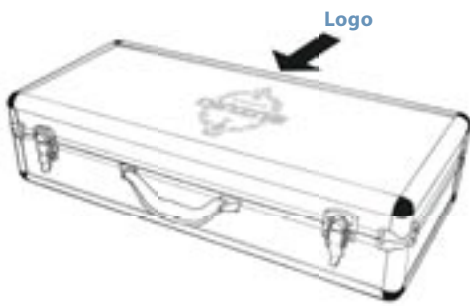
If You Have Any Problems Or Questions About Your Saxophone, Call Us Toll Free. We Can Help You.

Do Not Return Your Saxophone To The Store!

1-800-854-1594

You can also visit our web site at www.suzukibandinstruments.com

1. UNPACKING YOUR NEW SAXOPHONE



A. Position the Case

Place the aluminum "Roadie" Saxophone case in front of you as shown in this picture. You should be able to see the Suzuki logo on the case. If you do not see the logo, the case is upside down and should NOT be opened. Open the case ONLY if you can see this logo.



B. Open the Case

Unhook the 2 latches on either side of the handle and open the lid. Your new Saxophone has 3 different sections that must be CAREFULLY unwrapped. (The Mouthpiece is in the Storage Compartment.)



C. Unwrap Your Saxophone

- Slowly remove the plastic covering and paper wrapping on each of the 3 Saxophone sections. ①
- Small foam tabs have been inserted to protect the keys during shipping. These must now be removed and can be thrown away. ②

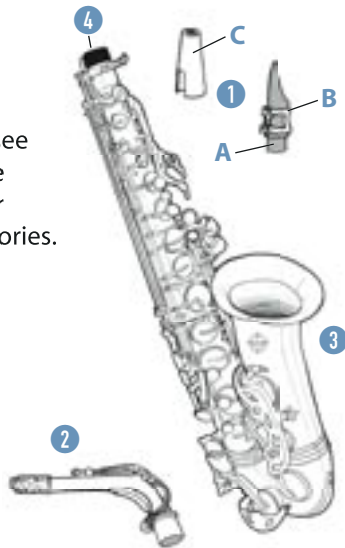
Carefully put the sections back in the case in their proper compartments!

2. HERE ARE THE NAMES OF YOUR SAXOPHONE PARTS

A. Carrying Case

When you open the lid of your new Saxophone Carrying Case, you will see 2 sections and a Storage Compartment with your Mouthpiece and Accessories.

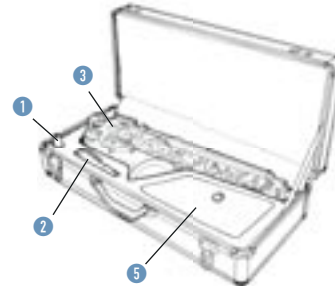
1. Mouthpiece
A. Mouthpiece
B. Ligature
C. Cap
2. Neck
3. Body
4. End Cap
5. Storage Compartment



B. Accessories

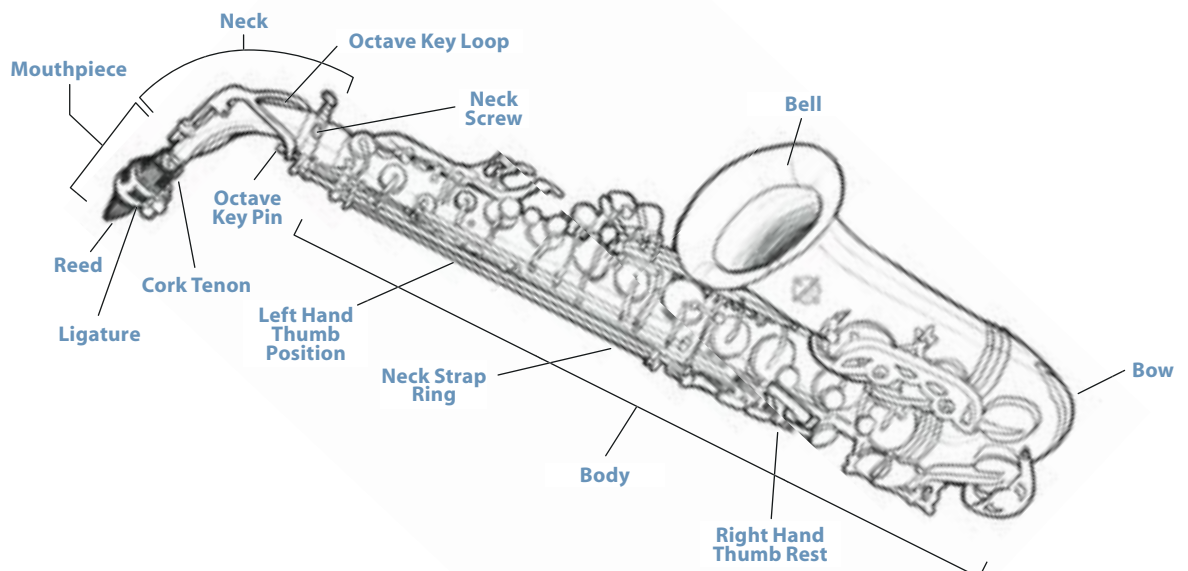
Your new Saxophone includes these accessories.

1. Neck Strap
2. Polishing Cloth
3. Cleaning Swab
4. Reed Holder and 2 Reeds
5. Cork Grease



3. THIS IS WHAT YOUR SAXOPHONE WILL LOOK LIKE WHEN ASSEMBLED

This picture shows you what your Saxophone will look like when it has been completely assembled. Read the next sections to learn how to put your Saxophone together so that it looks like this when you are finished.

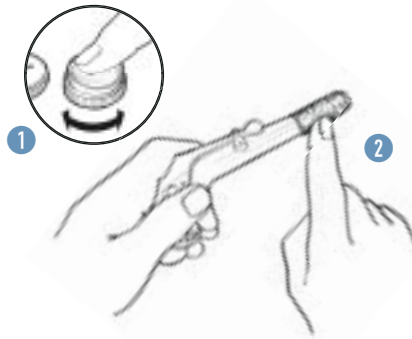


4. HOW TO PUT YOUR NEW SAXOPHONE TOGETHER



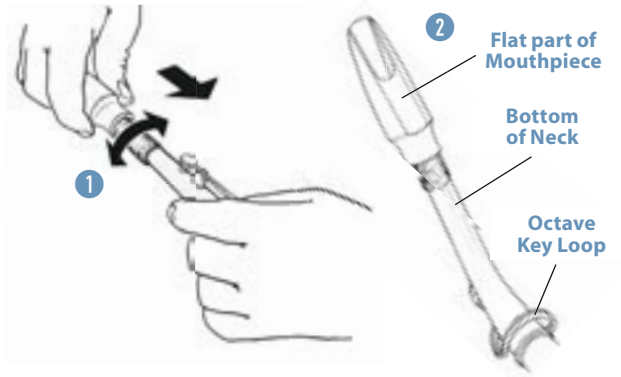
A. Put on the Neck Strap

- Locate the Neck Strap in the Storage Compartment of the Saxophone Case.
- Unwrap the Neck Strap.
- Loosen the Neck Strap and place it over your head so that it rests around your neck as shown. Leave it there for now as you will need it shortly. ①



B. Grease the Cork Tenon

- Locate the Neck in the Case and remove this section.
- Also locate the Cork Grease in the Storage Compartment and remove. Open the Cork Grease and put a small amount of Cork Grease on your pointer finger. ①
- Spread the Cork Grease on the Cork Tenon of the Neck Section as shown. ②
- Put the Neck Section back in the Case for now. Close the Cork Grease and return it to the Storage Compartment.

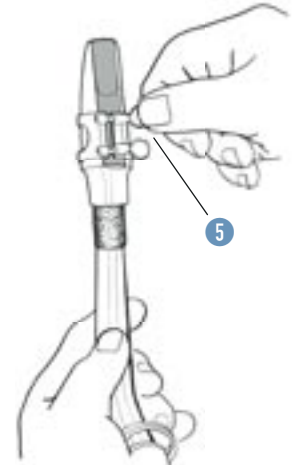
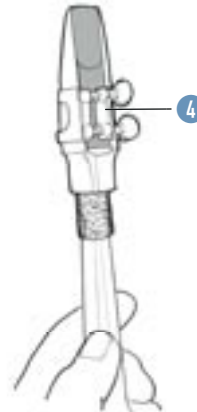
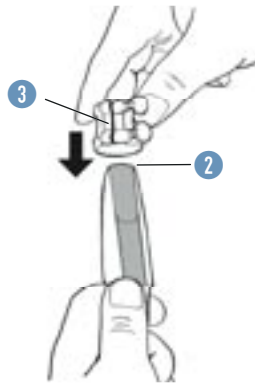
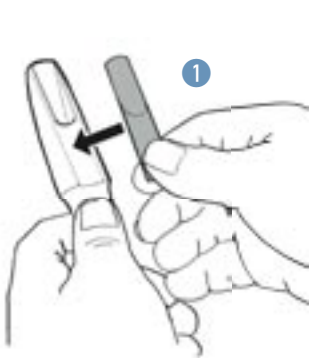


C. Attach the Mouthpiece

- Locate the Mouthpiece in the Storage Compartment and remove this section.
- The Mouthpiece has a Cap and Ligature on it. Remove the Cap and place it back in the Storage Compartment. Loosen the Ligature Screws, remove it and place back in the Storage Compartment for now.
- Slowly push the Mouthpiece on to the Cork Tenon of the Neck Section as shown. Use a gentle back and forth motion. Push the Mouthpiece about halfway down the Cork Tenon for now. ①
- The flat part of the Mouthpiece should be facing down as shown. ②

BE CAREFUL!

Do not squeeze the Octave Key Loop when pushing the Mouthpiece into the Neck Section.



D. Preparing your Mouthpiece, Reed and Ligature

- Locate and remove the Reed Holder from the Storage Compartment.
- Carefully remove a Reed out of the Reed Holder and place the thin end of the Reed in your mouth for a minute. The Reed needs to be moistened before you can place it on the Mouthpiece.
- Now place the FLAT side of the moistened Reed on the FLAT side of the Mouthpiece. ①
- The top of the Mouthpiece and the top of the Reed should be at the same height. ②
- Now locate the Ligature. The screws should remain loose. While holding the Reed in position with your left thumb, CAREFULLY place the Ligature over the Mouthpiece and Reed. DO NOT TOUCH THE THIN TIP OF THE REED! ③
- Push the Ligature down on the Mouthpiece so that it covers the smooth part of the Reed. It should look like this when done properly. ④
- Now, slowly tighten the screws on the Ligature until they are tight, but not too tight. This will hold the Reed in place while you are playing. ⑤

BE CAREFUL!

The top of the Reed is VERY thin and delicate. If you chip or crack it, you will have to use another Reed.

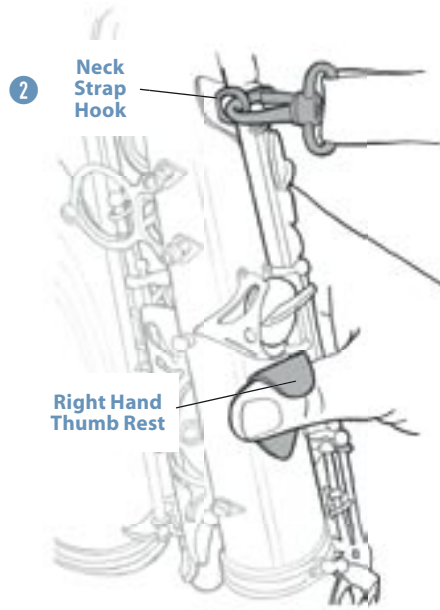
4. HOW TO PUT YOUR NEW SAXOPHONE TOGETHER

(continued)

E. Attach the Neck and Strap to the Saxophone Body



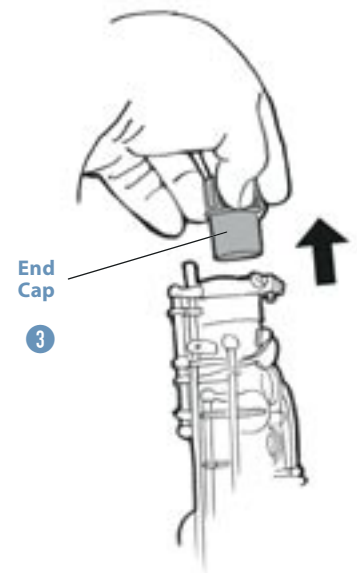
- Carefully remove the Saxophone Body from the Case. Use 2 hands and be careful not to squeeze the long rods too hard.
- Sit down in a chair that has no arms and lay the Saxophone across your knees as shown. ①



② Neck Strap Hook

Right Hand Thumb Rest

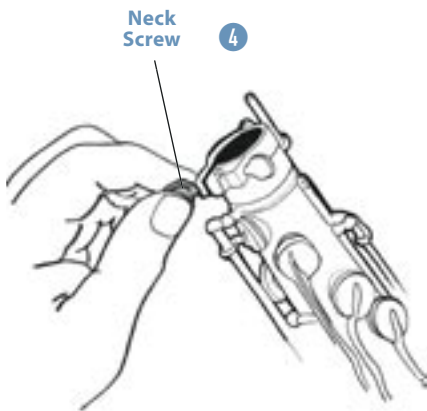
- Now put the Neck Strap Hook into the Ring on the back of the Saxophone, just above the Right Hand Thumb Rest, as shown. ②



End Cap

③

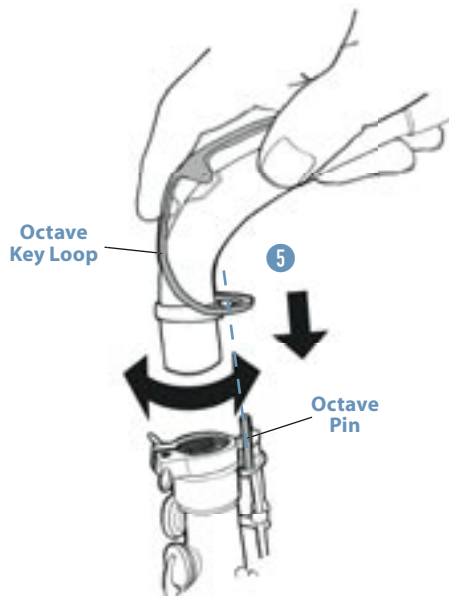
- Remove the End Cap and put it back in the Storage Compartment. ③



Neck Screw

④

- Loosen the Neck Screw, but don't take it all the way out. ④

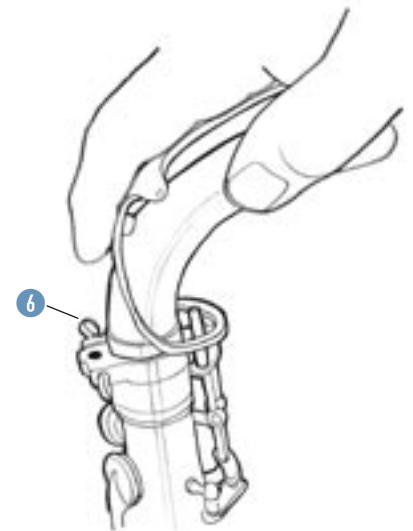


Octave Key Loop

⑤

Octave Pin

- Finally, take the Neck Section with the Mouthpiece attached, and place it in the Saxophone Body. Use a gentle back and forth motion until the Neck is all the way into the Saxophone Body. Make sure that the Octave Pin is inside the Octave Key Loop. ⑤



⑥

- The Neck Section attached to the Saxophone Body should look like this when you have finished.
- Tighten the Neck Screw, but do not over tighten. ⑥

BE CAREFUL!

Do not touch the tip of the Reed when you are attaching the Neck to the Saxophone Body.

Do not turn the Neck around and around. Just back and forth.

Do not squeeze the rods and keys on the Saxophone Body. They are very long and delicate. Be gentle.

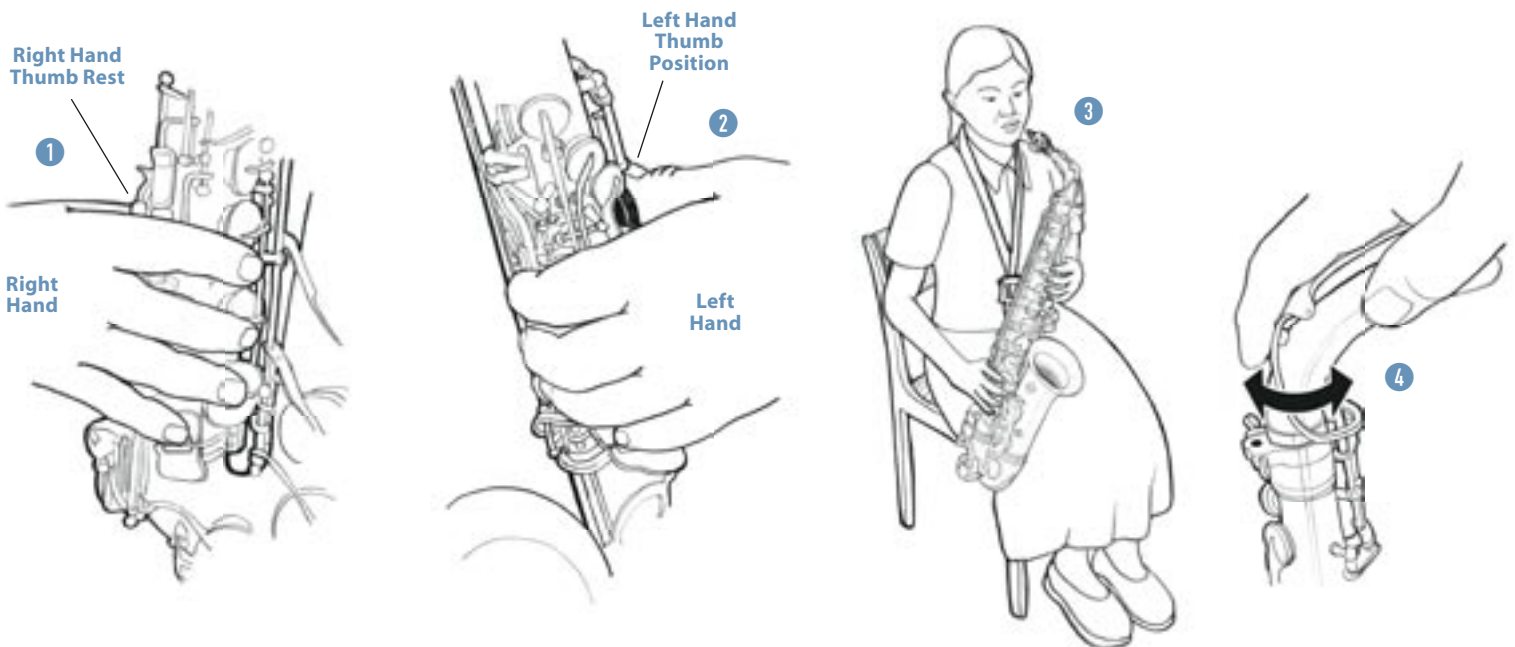
Do not dangle the Saxophone from your Neck Strap.

Do not pick up or hold the Saxophone by the Neck Section.

Your new Saxophone should now look like this.
Have fun!



5. PLAYING POSITION



- Place your right thumb under the Thumb Rest and curl your fingers around the keys. ①

- Place your left hand in this playing position. Your left thumb should rest on the black button. ②

- Carefully lift your Saxophone and place it on the right side of your body. Adjust your Neck Strap so the Mouthpiece is at the same level as your mouth. ③

- You may also need to adjust the Neck and Mouthpiece to get a comfortable playing position. ④

BE CAREFUL!

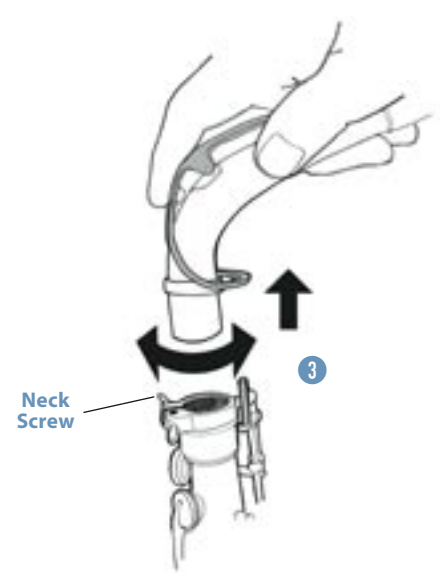
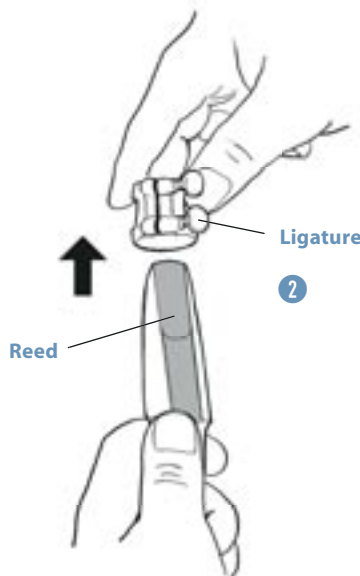
Let the Neck Strap take the weight of the Saxophone

When positioning the Saxophone next to your body, be careful NOT to hit the chair

Make sure the Neck Strap is securely connected to the Saxophone

Move slowly until you get familiar with the Saxophone playing position. It will become very natural in a short period of time

6. WHEN YOU HAVE FINISHED PLAYING YOUR SAXOPHONE



- Unhook your Neck Strap from the back of the Saxophone body.
- Position the Saxophone body back on your knees. ①

- Loosen the Ligature. Carefully remove the Reed. Dry it with the Polishing Cloth starting at the thick end moving towards the tip. Be very careful at the tip. Return it to the Reed Holder and put the Reed Holder back in the Storage Compartment.
- Now take off the Ligature and remove the Mouthpiece. Dry the Mouthpiece with the Polishing Cloth. Put the Ligature back on the Mouthpiece, tighten the screws slightly, place the Cap over the Mouthpiece and return to the Storage Compartment. ②

- Next remove the Neck from the Saxophone body. Loosen the Neck Screw and slowly move the Neck back and forth until it is separated from the Saxophone body. Place it back in its proper compartment in the Case. ③



- Locate the Cleaning Swab from the Storage Compartment.
- Place the Cleaning Swab into the bell of the Saxophone body. ④



- Carefully turn the Saxophone upside down so that the weighted end of the Cleaning Swab comes out the Neck end of the Saxophone. ⑤
- Carefully and slowly, pull the swab through the Saxophone body. Repeat. This will dry the inside of your Saxophone and help protect the key pads from moisture.
- Place the End Cap back on the Saxophone and return to the Case. Carefully lay the Saxophone Body back in its proper section and position in the Case.
- Remove your Neck Strap and return it to the Storage Compartment.

BE CAREFUL!

When removing the reed, do not touch the tip.

When removing the Neck, do not turn it around and around.

Be very careful when turning the Saxophone Body upside down to clean it. You may want to hold your Saxophone above the Case while performing this function. You do not want to drop the Saxophone or bang it against the chair.

Do not squeeze the long rods or press down too hard on the keys.

Care & Maintenance

DO'S

- DO** Be careful when handling your Saxophone. It is a delicate instrument.
- DO** Clean off the Mouthpiece and swab out the Saxophone after you have finished playing.
- DO** Place each section back in the correct compartment in the Case.
- DO** Use Cork Grease on the Cork Tenon before assembling your Saxophone.
- DO** Use a gentle back and forth motion when putting together or taking apart your Saxophone sections.
- DO** Place the Cap over the Ligature and Mouthpiece after you have removed the Reed.

DON'TS

- DON'T** Force the sections into the Case.
- DON'T** Close the lid if it seems difficult.
- DON'T** Eat while playing.
- DON'T** Turn the Saxophone Neck Section around and around.
- DON'T** Press hard on the keys or rods when handling them.
- DON'T** Touch the tip of the Reed.



CONCERTINO COLLECTION
Saxophone
INSTRUMENTS THAT OUTPERFORM



The Name You Know

www.suzukibandinstruments.com